

ACDEU

# Priming Assisted Centrifugal Pump



Basic or SAE Mount  
**Model RP6D60**  
Size 8" x 6"



## PUMP SPECIFICATIONS

- Size:** 8" x 6" (203 mm x 152 mm) Flanges.
- Casing:** Gray Iron. Maximum Operating Pressure 230 psi (1586 kPa).\*
- Enclosed Type, Six Vane Impeller:** Gray Iron No. 30.  
Handles 1.22" (31 mm) Diameter Spherical Solids.
- Impeller Shaft:** Stress-Proof Stainless Steel.
- Replaceable Wear Rings:** Impeller - Gray Iron No. 30.  
Suction Head - Bronze No. C83600.
- Back Plate:** Gray Iron No. 30.
- Bearing Frame:** Gray Iron No. 30.
- Seal:** Cyclo Seal® Type, Mechanical w/Run-Dry Oil-Lubrication System.  
Silicon Carbide Rotating Face. Tungsten Titanium Carbide Stationary Face. Fluorocarbon (DuPont Viton® or Equivalent) Elastomers. Stainless Steel No. 18-8 Cage and Spring. Maximum Temperature of Liquid Pumped 160°F (71°C).\*
- Shaft Sleeve:** Chrome Plated Stainless Steel No. 416.
- Priming Chamber:** Gray Iron No. 30 Housing w/Stainless Steel Float and Linkage.
- Vacuum Hose:** EPDM.
- Discharge Check Valve:** Gray Iron No. 30 Housing; Buna-N Flapper.
- Radial Bearing:** Single Row Ball.
- Thrust Bearings:** Two Single Row Ball.
- Bearing Lubrication:** Grease.
- Flanges:** Gray Iron No. 30.
- Gaskets:** Vegetable Fiber, Resistant Synthetic Rubber.
- O-Rings:** Buna-N.
- Hardware:** Standard Plated Steel.
- Seal Oil Reservoir Sight Gauge.**
- Standard Equipment:** Belt-Driven 50 CFM Vacuum Priming Pump.  
Positive Seating Vacuum Priming Valve. Discharge Check Valve.
- Optional Equipment:** NPT Threaded Flanges. Metric Flanges. Strainer.  
SAE 1, 2 or 4 Bellhousing Adaptors.



**WARNING!**

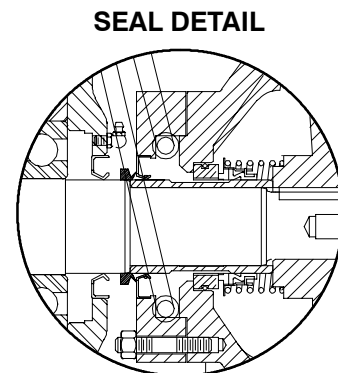
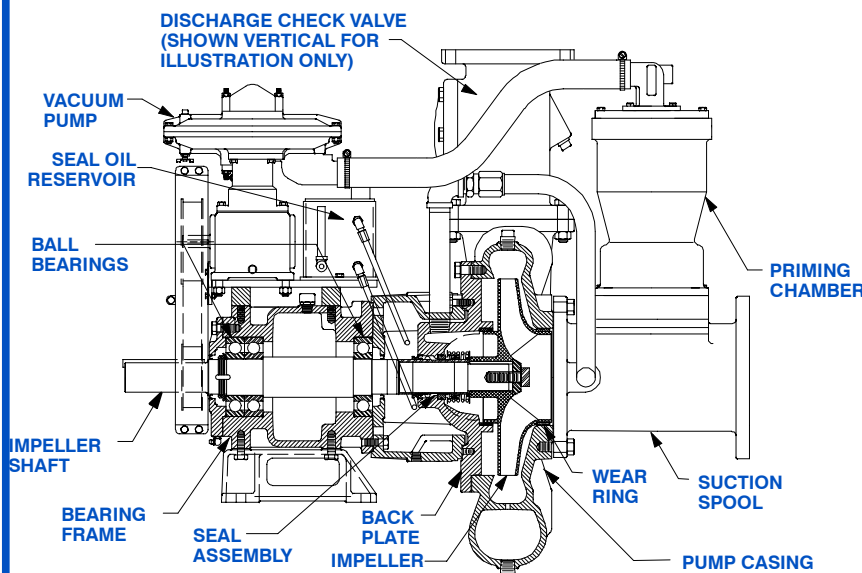
Do not use in explosive atmosphere or for pumping volatile flammable liquids.

## CONFIGURATION OPTIONS

This **Gorman-Rupp RP Series™** Pump is Available in the Following Configurations:

- Basic Frame Mounted.
- SAE 3/11.5 Bellhousing w/Stromag Coupling.

*\*Consult Factory for Applications Exceeding Maximum Pressure and/or Temperature Indicated.*



**THE GORMAN-RUPP COMPANY • MANSFIELD, OHIO**

GORMAN-RUPP OF CANADA LIMITED • ST. THOMAS, ONTARIO, CANADA

www.gormanrupp.com

Specifications Subject to Change Without Notice

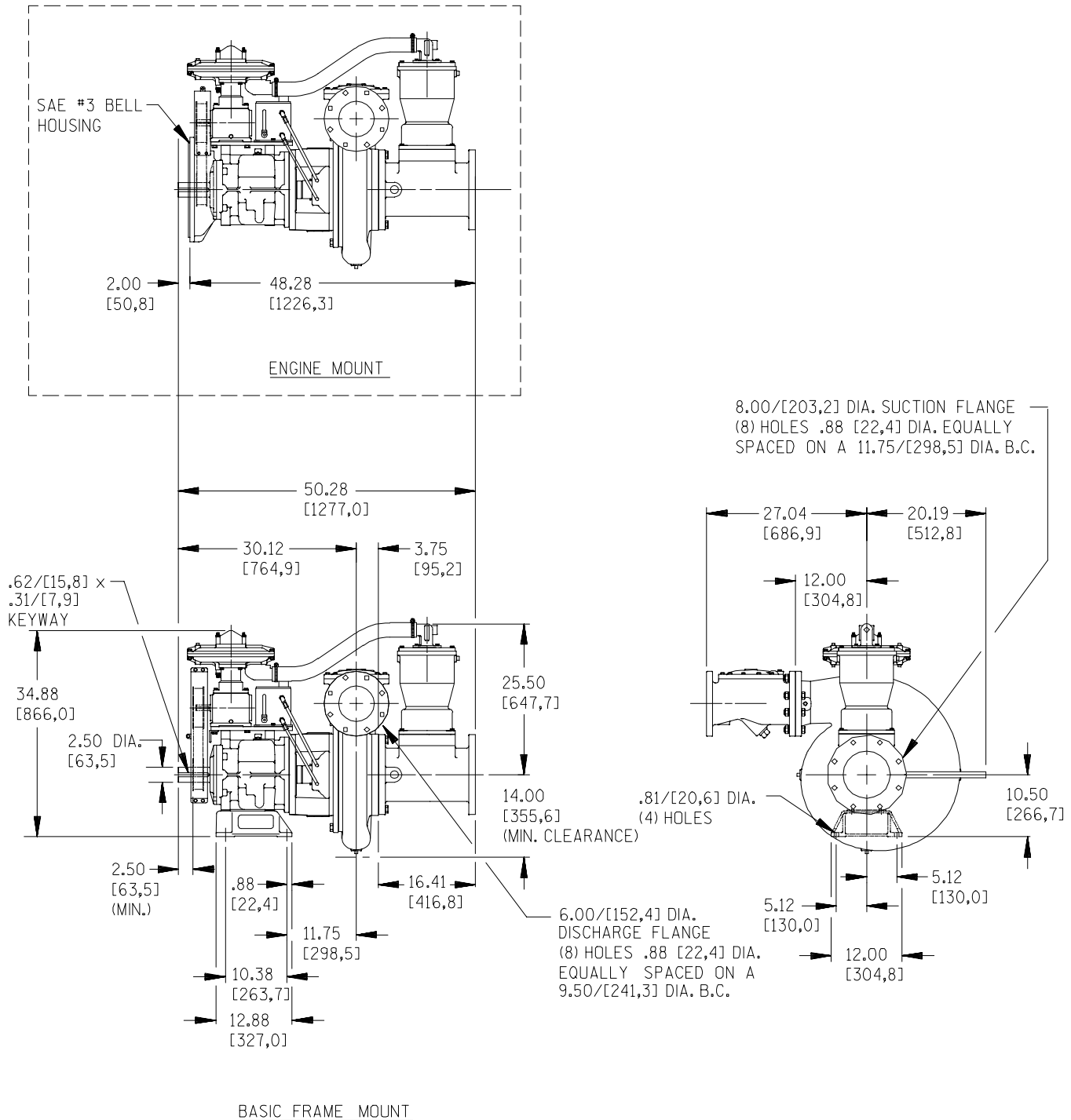
Printed in U.S.A.

**Specification Data**

**SECTION 42, PAGE 1040**

APPROXIMATE  
DIMENSIONS and  
WEIGHTS

**NET WEIGHT: 1600 LBS. (726 KG.)**  
**SHIPPING WEIGHT: 1800 LBS. (817 KG.)**  
**CRATE SIZE: 79 CU. FT. (2,2 CU. M.)**



DIMENSIONS:  
INCHES  
[MILLIMETERS]



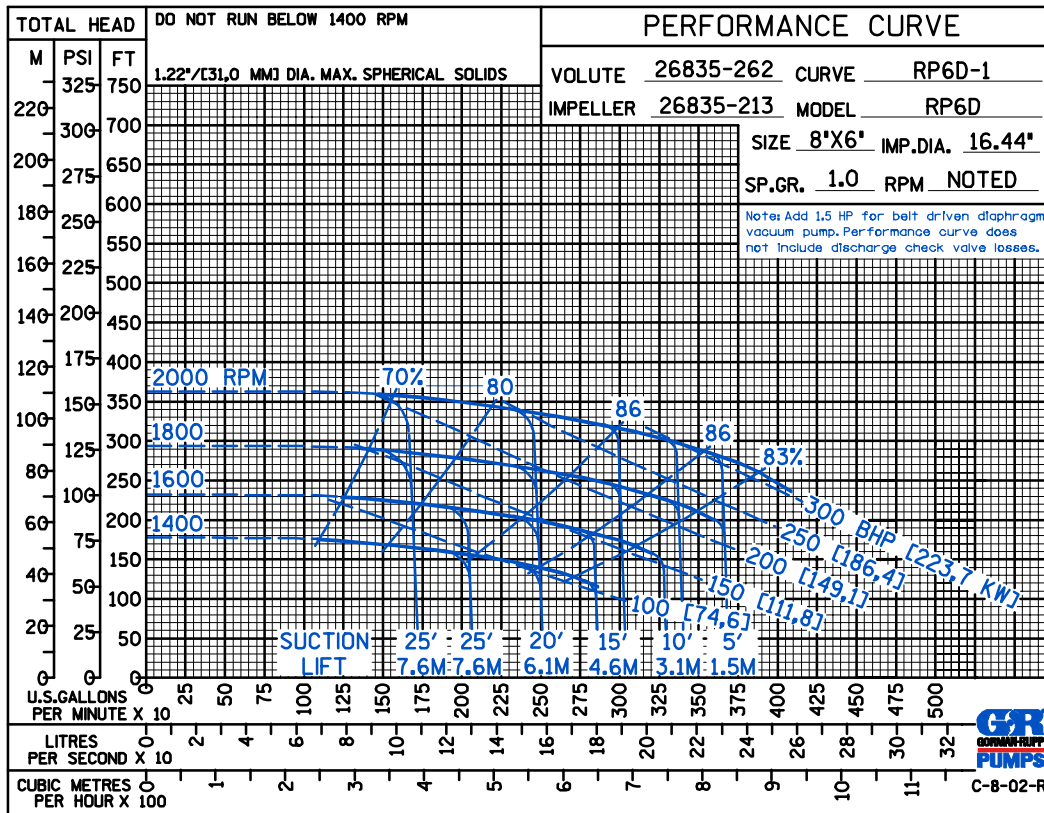
**THE GORMAN-RUPP COMPANY • MANSFIELD, OHIO**

GORMAN-RUPP OF CANADA LIMITED • ST. THOMAS, ONTARIO, CANADA

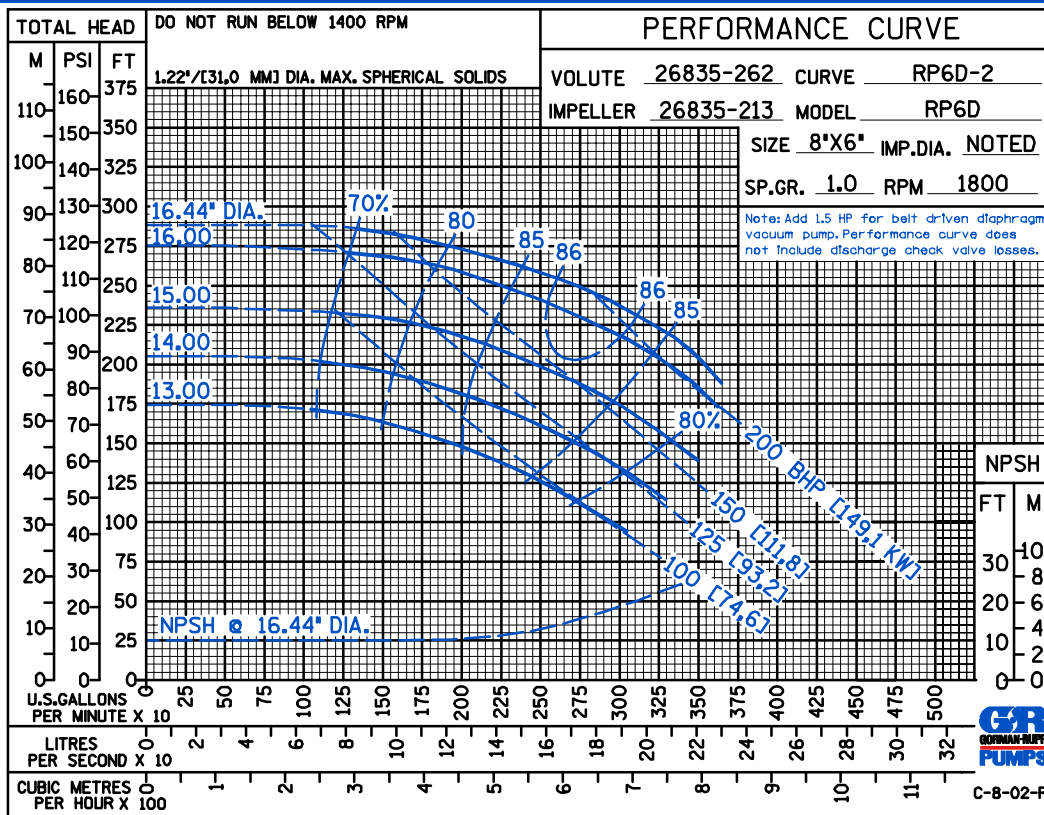
Specifications Subject to Change Without Notice

Printed in U.S.A.

ACDEU



ENGINE PERFORMANCE



ELECTRIC MOTOR PERFORMANCE



THE GORMAN-RUPP COMPANY • MANSFIELD, OHIO

GORMAN-RUPP OF CANADA LIMITED • ST. THOMAS, ONTARIO, CANADA

Specifications Subject to Change Without Notice

Printed in U.S.A.